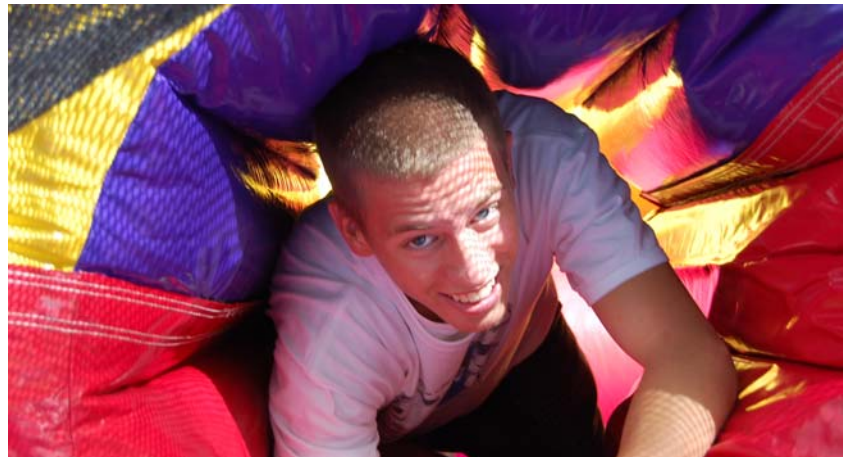


# A LOOK AT REBLE HIGH SCHOOL



**Parent Newsletter-October 2009**



# Preble Parent Newsletter



## Green Bay Preble High School

**Principal:**  
Rod Bohm

**Associate Principals:**  
Jeff Sielaff  
Renee Every  
Mary Kramer  
Jo Wiebel

**Activities Director:**  
Dan Retzki

**Telephone Numbers:**  
**Main Office:**  
391-2400

**Attendance Office:**  
391-2403

**Student Services:**  
391-2402

### STUDENT MESSAGES AND DELIVERIES

We are experiencing too many disruptions of class and clerical time due to phone messages and student deliveries. Therefore, the office will not accept messages for students or deliveries other than from a parent in an emergency situation. Please help us with this issue!

### COMMONS

Our commons is a great focal point for Preble. It is open at 7:00 a.m. for juice, bagels, etc.

We would love to have you (parents/grandparents) join your child before school or for lunch. Give it a try!

### VACATIONS

It is preferred that students go on vacations during the breaks in their school calendar, which are many. Much is missed when a student is not in class. Class participation cannot be made up. When this is not possible, students should obtain a pre-excused absence from the attendance office prior to going on vacation.

### ENTERTAINMENT BOOKS

Entertainment Books are available through the Main Office at Preble and various student groups. Profits go to support co-curricular activities. You can stop by anytime and pick one up for \$30.00.

### MATH/SCIENCE LABS

The Preble High School Math Lab (room 246) is available to all students needing help in math periods 1-8. Students may go to math lab during their study hall, lunch, or open periods. Science Lab (room 212) is only open periods 4, 5, and 6.

### CHURCH PARKING

Parking at Atonement Lutheran Church, which is located on the Southside of Gauthier Family Stadium, is not allowed before school and during the school day.

### NO SCHOOL

There will be no school on Friday, October 16<sup>th</sup> for Professional Learning Activities for staff and October 30<sup>th</sup> and 31<sup>st</sup> due to Teacher Convention Days.

### DANZ STREET GATES

The Danz Street gates are closed approximately one hour before and one half hour after each game at Gauthier Family Stadium. Please keep this in mind when picking up your student at Preble High School or parking for the games.

### REPORT CARDS

The first six-week grading period ends on Monday, October 5, 2009. Look for your child's report card home during the week of October 19, 2009.

### THANKS

Thanks to the Parent Network for hosting the freshmen dance. This was an important event in helping our freshmen become comfortable at Preble.

### DISTRICT NEWSLETTER

The district now has an e-mail newsletter. Visit [www.greenbay.k12.wi.us](http://www.greenbay.k12.wi.us) and click on For Parent Tab and click on District Newsletter. You may subscribe and receive up-to-date district news, early school closings due to weather and so on. You can also link to Preble's website through the district website and access information on sports schedules, dances, and music concerts.

### DROPPING STUDENTS

Please do not drop off or pick up your students where the busses are located on Danz and Newberry Ave.

## SENIOR PICTURE DEADLINE

Senior color yearbook pictures are due by December 1, 2009. We will not accept black and white photos, only color. Ideally, the photo should be 1 ½ inches by 2 inches with the distance from eyebrow to chin approximately 5/8 inch. However, we can accept other size photos only if they can be resized to that proportion. The best poses are ones in which the student is facing the camera and the shot is from the top of the head to mid-chest. If there is not enough room above the head (background), there is a danger of not being able to reduce the size enough to fit. Most wallet sizes will work but if you have a question, call Mrs. Sutton at 448-7500 ext. 4054. We cannot guarantee that photos received after December 1, 2009 will appear in the color senior section. Most professional photographers send the yearbook pose chosen by the student directly to school; however, a confirmation list will be posted at school in early December. Seniors **MUST** check this confirmation list in order to be sure that their photo was received. NEW this year photos will only be accepted one of two ways either on CD with the students name clearly marked on it or by email to [jsutton@greenbay.k12.wi.us](mailto:jsutton@greenbay.k12.wi.us) ONLY. Please enter GBAPS-students name in the subject to ensure it does not get held up in the districts spam mail.

## SCHOOL FEES

Most checks have been deposited for general school fees, classroom fees and workbook fees. If you have an outstanding check made out to Preble please call Mrs. Barb Koenig in the Main Office at 391-2400.

## HALLOWEEN DANCE

Preble High School Dance Team will be hosting a Halloween Dance on October 15, 2009 in the small gym from 7:00-10:00 p.m.

## SCHOOL STORE

The school store is open before school, after school and during lunch hours. Items are also available through the Preble website.

## PARENT-TEACHER CONFERENCES

Parent-Teacher Conferences will be held on Friday, October 16, 2009 from 11:45 a.m. to 3:15 p.m. Night conferences will be held on Thursday, October 15 and Tuesday, October 20, 2009 from 3:30 p.m. to 7:00 p.m. You will receive a separate email on this.

## School Need (Wish List)

Preble has many uses for wheelchairs. If you have a wheelchair that you no longer have a use for please consider donating to the school office. Wheelchairs can be donated to Monday-Friday from 7:00 a.m.-3:30 p.m.

## SCHOOL MUSICAL Les Miserables

Preble Players Theatre is proud to present the Broadway Epic Musical "Les Miserables". It is based on the novel by Victor Hugo and considered to be one of the greatest Broadway Musicals of all time.

"Les Miserables" has not played in Green Bay since its last showing at the Weidner Center before it stopped bringing in touring shows. Don't miss your chance to see this epic love story and tale of the French Revolution.

Show Dates are November 13-14 and 19-21. Curtain Time is 7:30pm and tickets are \$10. Tickets will go on sale to the public beginning Monday, November 2<sup>nd</sup>. They are available from the ticket booth before and after school (7-7:30am, and 3-3:30pm) or by calling 391-2400 and leaving a message on our ticket hotline.

\*\*\* Please note that this production is not suitable for children under 10 years old.

## WKCE

Testing for WKCE for all Sophomores will be held on October 27, 28, November 3, and 5. Only Sophomores will be here during the morning testing. You will receive a separate mailing on this.



# Parent Network

## Freshman Dance

The Freshman Dance was well attended by 177 students on Sept 18th. This dance is sponsored with the help of Link Crew Leaders who attend the dance. Most participants stayed until the end which suggests that it was a great time. A big thanks to Sue Hermans, Carla Werkheiser and Deb VandenBusch for organizing this event. Thank you to all the parents who helped, Preble teacher Shaun Yonts and Mark Bonetti for his donations from the school store.

## Homecoming 2009

Homecoming Parade: Judging for the Homecoming Parade was difficult this year. The student worked very hard on their floats! This year the FFA float took 1st place closely followed by Center Stage and the Senior Class. Thank you to Lori Broeren, Missy Martin & Cindy Baeb for judging this event.

Homecoming Dance: Kudos to Frau Marshall and the Student Council for planning a successful Homecoming Dance. Twenty parents were able to relive their Homecoming days by helping with ticket collection, coat check and chaperoning. Thank you so much to all the parents who helped with this event. Thank you to Patty Albers who organizes the chaperones. We are still looking for more parents to chaperone Snow Ball on February 13th. Please consider helping us. We know students always say they don't want us there but without somebody's parents stepping forward we are not able to offer these events. Please contact Patty Albers palbers1@sbcglobal.net

## Parent Network Interest Sheet & Donations

Thank you to all the parents who returned Parent Network Interests sheets and also generously included a check. Our organization does not do fundraisers. Our mission is to provide safe (drug and alcohol free) events for students. We just hope to break even on our events. We also offer a \$500 scholarship each year to a deserving senior toward their education. In the past years we too are struggling to find a way to pay for the events we sponsor and to get parents to help. It is not too late to help us out! You don't need a form; just drop off a piece of paper addressed to Parent Network with your name, e-mail or phone # and an area of interest in the Main Office. If you have a donation please just put it in an envelope addressed to Parent Network and this can be dropped off in the Main Office, as well. Any questions you can contact Cindy Baeb at cindybaeb@gmail.com or Patty Albers @ palbers1@sbcglobal.net

## Teacher Appreciation Bakers

The next event for Parent Network is to provide baked goods for our outstanding teachers during the evening teacher conferences on October 15th. If you are able to bake something for this event please contact **Kari Petitjean @ kpetitjean@new.rr.com**

## Parent Network Meetings

The Parent Network meets the first Wednesday of each month in room 105. Please consider joining us. Mr. Bohm continues to update us on Preble High School's 2009-2010 Student Learning Goals and the activities of the Leadership Team. It is very interesting to hear what steps are being taken to make Preble High School even better for our students. Our next meeting will be on October 7th @ 6:00 in Room 105. Hope to see you there!



# GUIDANCE NEWS

## October 2009



---

STUDENT SERVICES PHONE NUMBER: 391-2402

HOURS: 7:15-3:15

---

### APPLYING TO COLLEGE

Past experience dictates technical school and college-bound seniors should apply to the schools of their choice early in the fall; hopefully during the month of October. Applications should be submitted to the Student Services Office so a transcript of credits can be attached and checked to eliminate errors and omissions. Last year, Preble's Student Services Office processed nearly 2700 transcripts and applications, so please allow ten school days to prepare these materials.

### ASVAB (Armed Services Vocational Aptitude Battery)

Students interested in joining the Armed Services should consider signing up to take the ASVAB test at Preble. Testing will take place on Tuesday, October 27<sup>th</sup>, at 7:30 a.m. The location will be announced at a later date. The ASVAB is a multi-aptitude battery of tests. It assists the student in better understanding how they compare to a nationally representative group of individuals on skills important to their future training and job performance. Taking the test does not obligate a student to join the Armed Services. Juniors and seniors who want to take the test should sign up in the Student Services Office. Taking the ASVAB is free.

### COLLEGE ENTRANCE EXAMS

Juniors are encouraged to take their college entrance exams, ACT/SAT, in the spring of their junior year. Tests can be taken more than once, if necessary. The ACT is now the most commonly used test, but the SAT may be required for some out-of-state schools. **Preble High School's school code, 500-795, should be included on the ACT/SAT registration form so that test scores can be added to the student's official transcript.** Stop in the Career Center to research college requirements. Registration packets are available in Student Services and/or visit the website [www.actstudent.org](http://www.actstudent.org) (ACT) or [www.collegeboard.com](http://www.collegeboard.com) (SAT). Registration deadlines are approximately 4 weeks prior to exams.

### ACT/SAT 2008-09 TEST DATES

ACT	October 24 <sup>th</sup>	SAT	October 4th
	December 12th		November 1st
	February 6 <sup>th</sup>		December 6th
	April 10th		January 24th
	June 12th		March 14 <sup>th</sup>
			May 1st

## **COUNSELOR ASSIGNMENTS**

Counselor assignments for the 2009-2010 academic year are in alphabetical order. Students are encouraged to see the Student Service's secretary to make an appointment to see their counselor. Appointments may be made for the present day or a day or two in advance. Students may make appointments during their study hall, during lunch periods, and during class if necessary. Walk-ins will be taken when there are open time spaces. Office hours are 7:15 a.m. to 3:00 p.m.

Our counselors are Camilo Gacharna, Phil Kerksieck, Cheri Mitchell, Al Pannier, Natalie Killion, Jennifer Scott, and Katie Thao. Counselors are available to talk about educational and career issues. Our social workers, Sandy Tree (last names A-L) and Christina Gingle (last names M-Z), are available to discuss personal and social issues with students. Appointments can be made in the Student Services Office. You may call the Student Services Office at 391-2402 for further help or information.

### **Counselor Assignments**

#### **Counselors**

**Phil Kerksieck**  
**Al Pannier (Department Chair)**  
**Camilo Gacharna**  
**Cheri Mitchell**  
**Jennifer Scott**  
**Natalie Killion**  
**Katie Thao**

#### **Student's Last Names**

**A-C**  
**D and S**  
**J and (Spanish Speakers)**  
**E-I**  
**N-R, M (Grades 10-11)**  
**K-L, Z, M (Grades 11-12)**  
**T-Y (Speaks Hmong)**

## **FINANCIAL AID FORMS**

Financial aid forms will not be available until January. At that time, the Student Services Office will notify students that they are available. A Financial aid informational meeting will be set up at Preble High School for senior parents/guardians in January.

## **FRESHMAN PARENT/COUNSELOR MEETINGS**

Starting September 21st, all parents and guardians of freshman will be participating in an Individual Planning Conference or IPC with their guidance counselors. These conferences will assist parents and their children to prepare for their futures whether they are going into the world of work, military, technical, or four-year colleges. This will be a great opportunity for parents and freshman to start planning for their high school years and beyond. Questions will be answered and resource materials will be available. If you have not signed up for your child's freshman conference, you can do so by calling 391-2402.

---

## **PSAT**

---

The Pre-SAT/National Merit Scholarship Qualifying Test (PSAT/NMSQT) is scheduled at Preble on Wednesday, October 14th. Many Juniors take the PSAT/NMSQT as the first step on the road to college and to qualify for scholarships. Sophomores can also take the PSAT, but are not able to qualify for scholarships until their junior year. By taking this test, a student may:

## **(PSAT continued)**

- practice for the SAT 1
- enter scholastic competitions
- tell colleges to send them information about programs, activities, and financial aid
- find out if they have the reading and math skills necessary to succeed in college

The fee will be \$13.00 and pre-registration is required. Students can sign up for the PSAT in the Career Center beginning September 23<sup>rd</sup>. Students who qualify for free/reduced lunch can have their test fee waived. This is a **voluntary test**.

## **SCHOLARSHIPS**

It is never too early to apply for scholarships. Many scholarships are available in the Career Center. Here are examples of scholarship opportunities:

**AES Engineers** scholarship deadline is less than a month away. We will be awarding **\$500** to the winner(s) each year. Students will submit an essay on one of the two topics that appear on the scholarship page of our web site

<http://www.aesengineers.com/scholarships.htm>

**Scholarship Deadline: October 6, 2009**

There are a variety of scholarships through the **Wisconsin Public Service Foundation** for four year and technical colleges. Since 1964, the WPS Resources Foundation has awarded over 3 million dollars in scholarships. For further information and deadlines, check online at: [www.wpsr.com](http://www.wpsr.com)

## **SENIOR MEETING**

On Wednesday, September 16<sup>th</sup>, counselors met with 400 seniors in the auditorium. Topics covered included ACT/SAT/ASVAB testing, applying to colleges, meeting with college/military representatives, and a variety of other topics. We want our seniors to be prepared for their final year and beyond. An outline of the presentation is available on the Preble website under "For Students".

## **WISCONSIN EDUCATION FAIR**

The Wisconsin Education Fair will be held at St. Norbert College on Wednesday, September 30<sup>th</sup> from 6:30 p.m. to 8:30 p.m., and Thursday, October 1<sup>st</sup>, from 9:00 a.m. to 11:00 a.m. The intent of this program is to provide prospective students and parents the opportunity to meet with admission and recruitment representatives from approximately 100 universities, technical schools and military branches in one central location and to supplement high school guidance programs. If you have further questions about the Wisconsin Education Fair, call (920) 403-3005.

# Library Media Center Happenings



## Preble Book Club (not really a club... anyone can join us at any time ☺)

For the second year in a row the LMC is hosting a book club. We meet approximately every six weeks during 4<sup>th</sup>, 5<sup>th</sup> and 6<sup>th</sup> hours. Students are welcome to bring along their lunches and eat while discussing the awesome book titles that were voted on by last year's book club members. Our first meeting is on October 14<sup>th</sup> and we'll be discussing *The Boy in the Striped Pajamas* by John Boyne. Our second meeting is on Dec. 1<sup>st</sup> to discuss *Looking for Alaska* by John Green. An added bonus is that most language arts teachers offer extra credit for those students who read and attend the book club meeting (students should check with their teacher regarding extra credit). Contact Mrs. Pearson, Mrs. Barber or Mrs. Suda with any questions.

## Online Resource Passwords

There are a variety of online resources available to our students even if they aren't here at school. Below is a list of the resources along with the passwords needed to log in. All websites can be accessed from the website below.

<http://www.greenbay.k12.wi.us/01/schools/lmc/preble/>

### CultureGrams

Username: preblehome  
Password: preblehome

### Opposing Viewpoints

School ID: preble

### Nettrekker

Login: gbpreble  
Password: 54321

### Reference eBooks

School ID: preble

### NewsBank

Logon: 17845  
Password: 17845

### Rosen Teen Health

User: gb  
Password: rosen

### SIRS Knowledge Source

Customer #: W10300H  
Password: 54303

### ProQuest

User: gbaps  
Password: mylmc

### World Book Online

Login ID: gbaps1  
Password: mylmc

Noodlebib (this is only the initial password, each student will set up his or her own account then use that info to log in)

Username: gbpreble

Password: student

### ProQuest Newspapers

Username: HXGT4NHDDS  
Password: welcome

## YOUTH SUICIDE PREVENTION RESOURCES AND SERVICES

### Why should we worry about youth suicide? Are many kids really depressed or suicidal?

- More than 1 in 5 Wisconsin high school students report symptoms of depression
- Suicide is the 2<sup>nd</sup> leading cause of death among youth in Wisconsin, accounting for more than 17% of all deaths in this age group

### What are the risk factors for suicide—things that are associated with suicide attempts?

- Previous suicide attempts are the strongest predictor of future attempts
- A history of depression or other mental disorders, including drug or alcohol abuse
- Unsupervised access to firearms, especially during times of perceived crisis
- Poor problem-solving skills, risky or impulsive actions, conflicts, stressful life events

### What are the warning signs?

Early warning signs are behaviors that parents may notice. These are the first signs that they are may be struggling with depression or a low mood. Be watchful to see if the symptoms persist for more than a few weeks or a month.

- Difficulty concentrating or a decline in quality of school work
- Social withdrawal, personality & mood changes
- Physical complaints related to emotions (stomachaches, headaches)

Urgent warning signs indicate that your child may have made a decision to harm themselves.

- Serious thoughts or direct statements about suicide, especially specific plan
- Impulsive or violent actions, rebellious behavior, or running away
- Hopelessness, helplessness, or worthlessness
- Giving away favorite possessions, “tying up loose ends”

### What can you do if you are concerned about your son or daughter?

A simple model similar to the concept of CPR, but in this case **QPR**, is being taught within Brown County to educate individuals regarding suicide prevention.

- **Question**-ask about thoughts of self-harm (it is a myth that asking the question will somehow implant the idea of suicide)
- **Persuade**-listen, express concern, avoid minimizing, offer hope
- **Refer**-be aware of resources (EAP, counseling providers who accept MA and/or offer sliding scale fee)

### National Resources

- Mental Health America of Wisconsin, [www.mhawisconsin.org](http://www.mhawisconsin.org)
- Helping Others Prevent and Educate about Suicide, [www.hopes-wi.org](http://www.hopes-wi.org)
- Wisconsin Department of Public Education, [www.dpi.wi.gov](http://www.dpi.wi.gov)

### Resources in Brown County

- Bellin Psychiatric Center, 920-433-3630
- Crisis Center, 920-436-8888
- If interested in participating in a QPR training, contact Christina Gingle at 391-2490

# **PREBLE CRAFT SHOW**

**Saturday, October 24th**

**10:00 a.m. to 3:00 p.m.**

Dear Parents and Guardians:

As we start the new school year, the Centers for Disease Control believes the H1N1 virus will be back this fall. As school starts, we believe that taking every preventative measure possible is the best way to contain the spread of the virus. Here are some key points for families to know:

- At this point, you do not need to keep your child home if someone else in the family is sick.
- The virus is not airborne, but spreads through contact through droplets (sneeze, cough). Therefore, masks are not effective. Parents and children should avoid touching their eyes, nose, or mouth, germs spread that way.
- Because H1N1 was around in the 70s, many older people have some form of immunity.
- Children, especially those with compromised immune systems, should get the standard flu shot, and then the H1N1 shot when it becomes available.
- Children should wash their hands often with soap and water, especially after coughing and sneezing. Unscented, alcohol-based hand cleaners are also effective.
- Teach your child to cover their nose and mouth with a tissue when they cough or sneeze. Or have them cough and sneeze into their sleeve.
- If your child gets sick and is only coughing or sneezing, they may come to school. If they have a fever of 100 degrees or more, they should stay home until the fever is gone for 24 hours without the aid of Acetaminophen (Tylenol) or Ibuprofen (Advil or Motrin).

Contact your medical provider and seek medical care if your child has a fever and difficulty breathing.

More information about the H1N1 flu is available on the following websites:

<http://pandemic.wi.gov>

<http://www.cdc.gov>

<http://www.who.int/csr/disease/swineflu/en/index.html>

Thank you for your cooperation. Together we can minimize the effects of this flu and keep everyone safe and healthy.